



CAE ducted Vertical ducted unit

Dehumidification > CAE ducted - Vertical ducted unit

- + "Air heating" option (electric heating or hot water battery)
- + "Water heating" option (water condenser)
- + Available in 3 capacities (8 to 13.5 l/h)



2 YEAR
WARRANTY

	CAE 508 1-phase	CAE 508 3-phases	CAE 510 3-phases ***		CAE 513 3-phases ***	
PRODUCT REFERENCE						
Standard model	W28CAE8M	W28CAE8	W28CAE10		W28CAE13	
Model with water condenser option	W28CAE8MC	W28CAE8C	W28CAE10C		W28CAE13C	
Model with air heating option using electric heaters	W28CAE8ME	W28CAE8E	W28CAE10E9	W28CAE10E18	W28CAE10E9	W28CAE10E18
	4,5 kW	9 kW	9 kW	18 kW	9 kW	18 kW
Model with air heating option using electric heaterset Condenseur	W28CAE8MEC	W28CAE8EC	W28CAE10E9C	W28CA10E18C	W28CAE13E9C	W28CA10E18C
	4,5 kW	9 kW	9 kW	9 kW	18 kW	18 kW
Model with air heating option using ho water battery	W28CAE8MB	W28CAE8B	W28CAE10B		W28CAE13B	
	23 kW	23 kW	35 kW		41 kW	
Model with air heating option using ho water battery et Condenseur	W28CAE8MBC	W28CAE8BC	W28CAE10BC		W28CAE13BC	
	23 kW	23 kW	35 kW		41 kW	

For all CAE orders a deposit of 30% will be requested with the order.

* Standard unit, in the following nominal conditions: air 30°C, humidity 70%.

** Values measured and certified in compliance with EN ISO 3741 & EN ISO 354 standards, by CCTM (Centre de Transfert de Technologie du Mans) on standard units.

*** excluding units featuring electrical

**** An annual check of the sealing of the refrigerating circuit must be carried out for all refrigerating equipment with a load in refrigerating fluid >2 kg and < 30 kg (cf. Art 3 7/05/05 regulation, French decree n° 737-2007).

CAE 510 single phase on request.

(1) for units with water condenser option.

ACCESSORIES INCLUDED IN THE PACK



Hygro control box

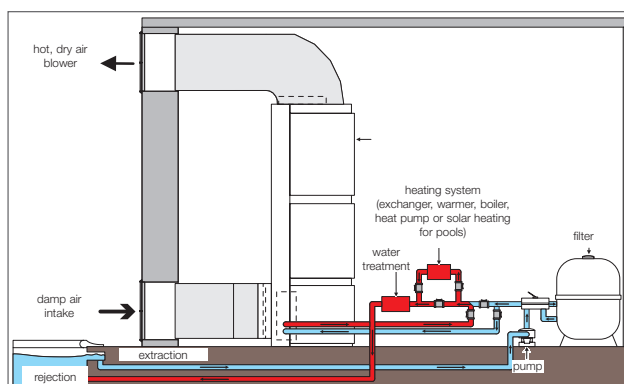
	CAE 508 1-phase	CAE 508 3-phases	CAE 510 3-phases ***	CAE 513 3-phases ***
TECHNICAL SPECIFICATIONS				
Capacity (l/h)	8		10	13.5
Absorbed power* (W)	2710		4040	5430
Operating power* (W)	6500*		9695*	13030*
Nominal airflow (m3/h)	2040		2720	3400
Air flow (m³/h)	2400		3050	3800
Min. air flow (m³/h)	1780		2380	2970
Available pressure (mmCE)	15		19	23
Electric power supply	230 V / 1 / 50 Hz		400 V / 3N / 50 Hz	
Nominal operating power (A)****	17.5	5.3	8.5	11
Max. absorbed intensity (A)***	37.1	8	14.5	17
Refrigerant fluid quantity (kg)	1300/1450 ⁽¹⁾		2200/2500 ⁽¹⁾	
Sound power (dB(A)**)	-	77.6	-	77.6

HOT WATER BATTERY SPECIFICATIONS				
Power (kW) with primary at 90/70°C	23	23	35	41
Power (kW) with primary at 45/40°C	5.9	5.9	9.8	11.6
Water flow (m3/h) with primary at 90/70°C	1	1	1.6	1.9
Load loss (mCE) with primary 90/70°C	1.25	1.25	1.9	2.5
Connection (mm)	20 / 27 mâle à visser			

EXTRACTION AND BLOWER OPTIONS

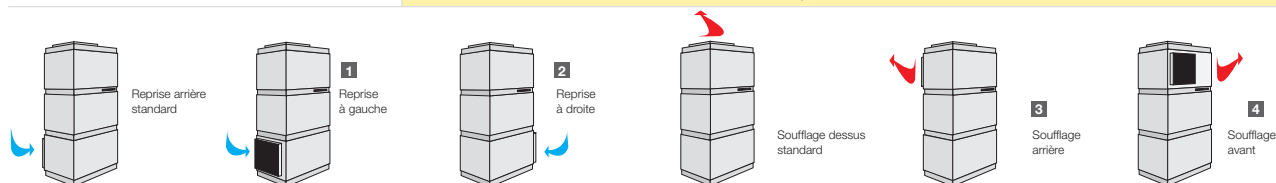
Installation of an appliance with the TITANIUM water condenser option.

- Damp air intake: the standard intake is installed in the lower part at the rear of the CAE. Optionally, the intake can be installed in the lower part on the left or right hand sides of the CAE.
- Dry air blower: the standard dry air blower is installed in the upper part on the top of the CAE. Optionally the blower can be installed on the top part on the front or rear face of the CAE.



EXTRACTION AND SUPPLY

Extractor on the left (frame + filter)	1	W28REGA 303,91 € ex VAT
Extractor on the right (frame + filter)	2	W28REDR 303,91 € ex VAT
Rear blower (frame)	3	W28SOAR 214,36 € ex VAT
Front blower (frame)	4	W28SOAV 474,92 € ex VAT

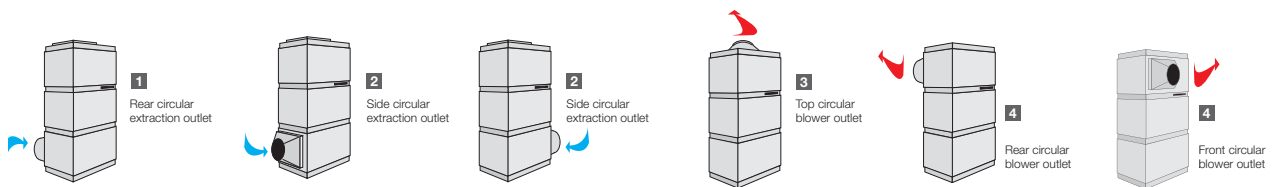




CAE ducted Vertical ducted unit (suite)

Dehumidification > CAE ducted - Vertical ducted unit

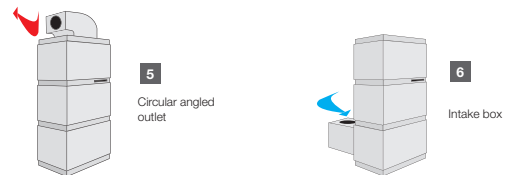
	CAE 508 1-phase	CAE 508 3-phases	CAE 510 3-phases ***	CAE 513 3-phases ***
AIR EXTRACTION AND SUPPLY ACCESSORIES				
Diameter	Ø 400		Ø 500	
Circular rear extraction accessories ⁽¹⁾	1	WCH01245	WCH01246	
Circular side extraction accessories ⁽¹⁾	2	WCH01247	WCH01248	
Circular top extraction accessories ⁽²⁾	3	WCH01249	WCH01250	
Circular front/rear blower accessories ⁽¹⁾	4	WCH01249	WCH01250	



(1) Plan the left or right option
 (2) Plan the front or rear blower option. For other metalwork, contact us

EXTRACTION AND SUPPLY BOX			
Diameter	Ø 400		Ø 500
Circular angled outlet	WCH01251	478,11 € ex VAT	WCH01252 481,27 € ex VAT
System central intake box	WCH01253	385,64 € ex VAT	WCH01254 424,52 € ex VAT
Intake box for 625 x 425 grate	WCH03719	294,23 € ex VAT	Consult us

Other accessories or casing: contact us

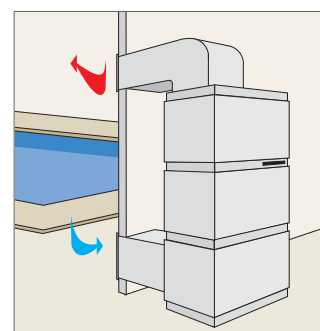


PIÈGE À SON			
Diameter	Ø 400		Ø 500
Sound trap	WCH03682	852,2 € ex VAT	WCH03683 1127,51 € ex VAT

Circular sound trap with Ø 400 central core for CAE 508 et Ø 500 core for CAE 510, 513. Can be mounted on the intake or blower side.

OPTIONAL ACCESSORIES

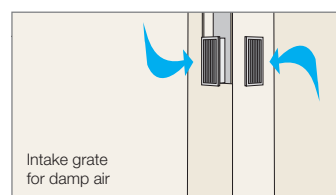
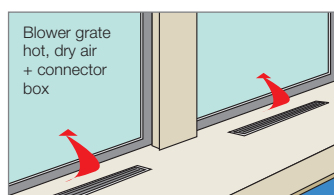
	625 x 425 grate (plan for 2 grates)	Double 625 x 425 deflector (blower)	Sound trap	Blower angle	Remote regulator box for the dehumidifier	Remote regulator box for 2 dehumidifiers
reference	WTT02355	WTT02366	WCH01234	WCH01255	R0771000	R0771100
ex VAT Price	183,90 €	97,41 €	742,92 €	447,65 €	811,51 €	955,09 €



CAE TECHNICAL ROOM + DUCTS

Installation of an appliance with the TITANIUM water condenser option.

- Damp air intake: the standard intake is installed in the lower part at the rear of the CAE. Optionally, the intake can be installed in the lower part on the left or right hand sides of the CAE.
- Dry air blower: the standard dry air blower is installed in the upper part on the top of the CAE. Optionally the blower can be installed on the top part on the front or rear face of the CAE.



Spare parts p.284

DIMENSIONS (MM) AND WEIGHT

	CAE 508 1-phase	CAE 508 3-phases	CAE 510 3-phases	CAE 513 3-phases
Weight (kg)	228	228	235	240

